



# The new Touareg

Effective from 01.10.2024

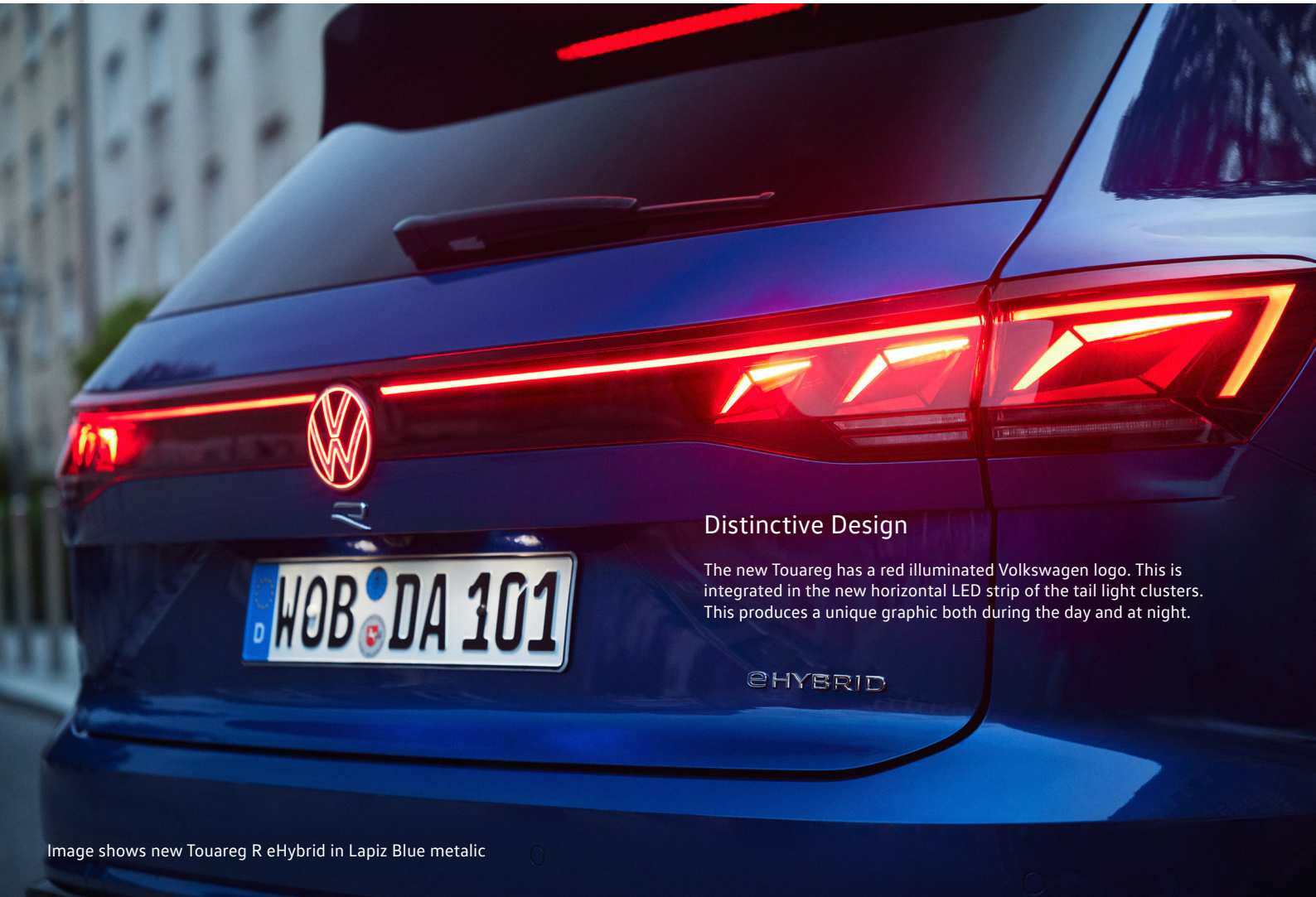




### Confident Appearance

The new Touareg is an SUV that meets high expectations and proves this too with a striking and sophisticated design. The wonderfully expressive front section with prominent air intakes and the powerful rear accentuate the sporty presence of the Touareg. Its balanced proportions emphasise its elegance as well as its size, which makes it a comfortable companion on the road.

Image shows new Touareg R eHybrid in Silicon Grey Matt special paint with optional 22" Estoril alloys



### Distinctive Design

The new Touareg has a red illuminated Volkswagen logo. This is integrated in the new horizontal LED strip of the tail light clusters. This produces a unique graphic both during the day and at night.

Image shows new Touareg R eHybrid in Lapiz Blue metallic



### InnoVision Cockpit

The 12" digital instrument cluster and the 15" screen of the infotainment system form one curved glass surface: the InnoVision Cockpit. Operated by touch, gestures or voice control, it displays functions in graphics and animations. Home screen content can be customised and buttons can be programmed freely for favourites and shortcuts.

Image shows new Touareg R eHybrid with optional 'Puglia' leather



### Expand your Horizons

The electric panoramic tilt/sliding roof is a real eye-catcher. With its generous glass surface, it offers more brightness and passengers a clear view of the sky. Its electric sun blind protects against excessive sunlight. Do you want to enjoy fresh air? If desired, the front half of the roof can be raised or moved completely backwards

Image shows new Touareg R eHybrid with optional 'Puglia' leather

## Premium Lighting

The HD matrix headlight not only provides better visibility at night but also supports you when driving. More than 19,000 individually controllable LEDs are used for each headlight. This enables your Volkswagen to project markings onto the road, for example, when the high beam is switched on. The HD matrix headlight has a special light animation ready for you.



Image shows new Touareg R eHybrid in Lapiz Blue metallic with optional 22" Estoril alloys

## Twice the drive. Twice the fun

The Touareg eHybrid is a plug-in hybrid that combines an electric motor and a TSI petrol engine. When the battery is sufficiently charged, you start in virtually silent electric mode, producing zero local carbon emissions. If you activate hybrid mode, you combine both drives for maximum system output of 280 kW (380 HP). A special highlight in this mode is the interplay between the navigation system and drive management. When you enter your destination into the navigation system and start route navigation whilst in hybrid mode, the combustion engine and electric motor work in perfect harmony with each other for the entire duration of your journey. The system delivers an output of 340 kW (462 HP). All engines are paired as standard with an eight-speed automatic gearbox and the 4MOTION permanent all-wheel drive system.



Image shows new Touareg R eHybrid in Lapiz Blue metallic with optional 22" Estoril alloys



Image shows new Touareg R Line in Oryx White Pearl



Image shows new Touareg R Line in Oryx White Pearl

# The new Touareg



## Petrol/ Electric

Code	Model Description	Transmission	Trim	Fuel	VRT <sup>1</sup>	Annual Road Tax <sup>1</sup>	HP	Combined CO <sub>2</sub> (WLTP) <sup>2</sup>	Combined I/100km (WLTP) <sup>2</sup>	RRP <sup>3</sup>	Delivery & Service <sup>3</sup>	ROTR*
RC8RZJ	Touareg R eHybrid 3.0 TSI PHEV 462HP DSG	Automatic	R	Petrol PHEV	9.0%	A2 €150	462	53	2.5	€105,995	€1,765	€107,760

## Diesel

Code	Model Description	Transmission	Trim	Fuel	VRT <sup>1</sup>	Annual Road Tax <sup>1</sup>	HP	Combined CO <sub>2</sub> (WLTP) <sup>2</sup>	Combined I/100km (WLTP) <sup>2</sup>	RRP <sup>3</sup>	Delivery & Service <sup>3</sup>	ROTR*
RC854J	Touareg R-Line 3.0 TDI 231HP DSG	Automatic	R-Line	Diesel	41.0%	F2 €1,250	231	215	8.2	€109,995	€1,765	€111,760

<sup>1</sup>VRT Bands and rate of Annual Road Tax are valid as of 1st January 2022 and calculated from the base model WLTP values for model year 2025 cars produced from CW36/2024 onwards. All vehicles with TBC are subject to EU type approval and with that were not available at time of going to print.

<sup>2</sup>The specified fuel consumption and emission values are the official figures obtained from tests under standardised EU test conditions in accordance with the Worldwide Harmonized Light Vehicles Test Procedure (WLTP). The above values reflect the standard vehicle excluding additional equipment such as optional extras and accessories which may have an effect on the fuel consumption (l/100km) and CO<sub>2</sub> emissions produced. To discover exact values please configure your desired vehicle at [volkswagen.ie/build](https://volkswagen.ie/build). You can discover more about the WLTP at [volkswagen.ie/wltp](https://volkswagen.ie/wltp).

<sup>3</sup>All prices (Retail, Delivery and ROTR) are recommended by Volkswagen Ireland. €1,765 includes optional Service Plan which can be removed upon request. Maximum delivery charge with Service Plan removed is €1,095.

\*Recommended On the Road Price.

Importantly note that the rate at which your vehicle pays Vehicle Registration Tax may increase as a result of your vehicle configuration. For more information, please consult your local Authorised Volkswagen retailer.

In accordance with (EU) 2020/740 ("Tire Labeling Regulation"), please visit [volkswagen.ie](https://volkswagen.ie) configurator for details relating to the tyres applicable to said vehicles.

Please note every effort has been made to ensure the contents of this publication (including RRP, CO<sub>2</sub>, fuel consumption and technical information) were accurate and up-to-date at the time of going print 1st October 2024. Volkswagen Ireland reserves the right to change specification, prices and withdraw products from sale without notice. Any such alternations will be notified to Volkswagen Retailers at the earliest opportunity. Please consult your local Authorised Volkswagen retailer for the latest product information.

3 Years Tyre Insurance covers tyres that are damaged by an Insured Event. Exclusions do apply. For more information on general terms and conditions, please click here (<https://www.volkswagen.ie/en/owners-and-users/wheels-and-tyres.html>)

# The new Touareg R Line

## Exterior Equipment

- » 20" 'Braga' alloy wheels in 'Dark Graphite'
- » IQ.LIGHT - HD matrix headlamps with poor weather light, entry and exit lighting
- » Automatic headlight control with LED daytime running light and Coming and Leaving Home feature
- » LED rear combination lamps with entry and exit lighting
- » Illuminated Rear Volkswagen Logo
- » Folding, power adjustable and heated exterior mirrors with front passenger exterior mirror lowering function
- » Headlamp washer system
- » Heat insulating glass windshield
- » Rear fog lamps
- » Wheel locks with extended anti-theft protection
- » Tinted rear windows
- » Stainless steel loading edge protection
- » Chrome tailpipe on left and right integrated in rear bumper
- » Black Roof Rails
- » R-Line bumpers, front and rear in R-styling
- » Chrome window surround
- » Exterior Mirrors - Body Coloured

## Safety Equipment

- » Driver and front passenger airbag with front passenger deactivation
- » Curtain airbag system front and rear including side airbags and belt tensioners
- » Anti-theft alarm system with interior monitoring, backup horn and towing protection
- » Emergency call service and roadside assistance call
- » Extended pedestrian protection measures
- » Safety optimised front head restraints
- » 3 point seat belts in front with height adjustment and seat belt pretensioner for outer rear seats
- » Automatic slip control differential lock
- » First aid bag and warning triangle
- » ISOFIX anchorage points for mounting 2 child seats on rear seats
- » Tyre pressure monitoring system
- » Preparation for alcohol interlock
- » With UNECE (R155)
- » Advanced driver attention & drowsiness monitor
- » Warning signal and warning light for front and rear seat belts not fastened

## Interior Equipment

- » Carpet mats in front and rear
- » White ambient lighting
- » Seat trim covers in "Vienna" leather
- » Illuminated vanity mirrors in double sun visors
- » Luggage compartment cover
- » Height and longitudinally adjustable steering column
- » Power steering system
- » Front seats with height adjustment
- » Stainless steel scuff plates with "R-Line" logo
- » Decorative inserts in 'Brushed Aluminum' for dashboard and door panels
- » Centre armrest in rear with beverage holder
- » Center armrest in front
- » Center console in High-Gloss Blackbezel in Dark Anodized Aluminum
- » Comfort seats in front
- » Remote unlocking for rear backrest
- » Soul Black headliner
- » Asymmetrical split folding rear bench seat and backrest, longitudinally sliding with backrest tilt and adjust
- » Lumbar support in front
- » Pneumatically adjustable lumbar support
- » Pedals in brushed stainless steel
- » R-Line specific, heated leather multifunction steering wheel with R-Line logo and shift paddles
- » Height and longitudinally adjustable steering column
- » Heated front seats
- » Front seats with power adjustment, driver seat with thigh support longitudinally sliding

## Functional Equipment

- » 15" navigation system 'Discover Pro Max'
- » 12" Multi Colour Active Info Display
- » 8 speaker sound system
- » DAB Radio
- » Online Services
- » Premium telephone system with storage compartment with mobile phone interface in front and wireless charging
- » Wireless App Connect with Apple Car Play and Android Auto and Volkswagen Media control
- » Always online e-Sim
- » Adaptive cruise control 'Stop & Go' incl. speed limiter
- » Air care climatronic with 2 zone automatic climate control with combined activated carbon filter

## Functional Equipment

- » Rear view camera
- » Multifunction camera
- » Electromechanical parking brake
- » Instrument cluster with electronic speedometer, odometer & trip odometer and tachometer
- » Forward collision warning 'Front Assist' Autonomous emergency braking
- » Park Assist with Park Distance Control
- » Start/stop system with regenerative braking
- » Lane keeping system 'Lane Assist'
- » Starter switch locking system
- » Driver Mode Selection
- » Air suspension with automatic, self-leveling suspension, height adjustment and electronic shock absorption control
- » Dynamic road sign display
- » Dynamic Light Assist
- » Dynamic headlight range control with dynamic cornering light
- » Easy Open & Close - sensor controlled luggage compartment opening and closing with remote unlocking
- » Heated Washer Nozzles
- » Keyless Access with SAFELOCK
- » Power latching for tailgate/trunk lid
- » 3 USB-C ports in front, 2 USB-C charging sockets on the center console in rear, charging capacity up to 45 W
- » Fresh air intake system with combination filter
- » Acoustics package 'Extra'- exterior noise suppression
- » Luggage compartment cover, electrically opening
- » Tool Kit
- » Tire Mobility Set
- » Two tone horn



# The new Touareg R eHybrid

(in addition to R Line)

## Exterior Equipment

- » Black exterior mirror housing
- » High Gloss Black Roof Rails
- » Tilting and sliding panoramic sunroof
- » Dark Red LED rear combination lamps with entry and exit lighting
- » Pirelli Tyres
- » Scuff plates in door apertures illuminated R-Model specific
- » Bumpers in "R" style, body-colored bumpers and lower door parts, air intakes with black fins

## Interior Equipment

- » 30 - Colour Ambient Lighting
- » Vienna Leather with 'R' Logo

## Functional Equipment

- » Air Care Climatronic 4 zone automatic climate control with enhanced air filter with activated carbon a. controls in rear
- » Active Climate Seats in front

## PHEV Equipment

- » Charging cable, mode 2, type 2
- » Charging cable 16A



Image shows new Touareg R eHybrid with optional 'Puglia' leather



# Options

The addition of optional extras may result in the vehicle increasing in Co2 g/km and therefore, attracting a higher rate of VRT than described in this product guide. For your exact configuration value, both Co2 g/km and RRP, please visit [volkswagen.ie](http://volkswagen.ie) configurator.

## Driver Assistance Systems

			R Line	R eHyrid	Options Priced From RRP
KS1	Head-Up Display		o	-	€2,045
			-	o	€1,390
PF3	Park Assist Package	Park Assist package incl. Park Assist Pro <a href="#">Forces Packages PTD &amp; WB4</a>	-	o	€620
PF8	Assistance Package	Lane Change System Side Assist, Proactive Passenger Protection System 'Pre Crash 360', Seat Belt Pre Tension for Passenger Protection, Front Cross Traffic Assist, Travel Assist, Lane Assist & Emergency Assist	o	-	€1,690
			-	o	€1,150
9R1	Night Vision		o	-	€2,860
			-	o	€1,945

## Audio & Navigation

			R Line	R eHybrid	Options Priced From RRP
9VV	Dynaudio sound system	Sound system "DYNAUDIO Consequence", 16-channel amplifier, 12+1 speakers, subwoofer, 730 W total power output	o	-	€ 2,530
			-	o	€ 1,720



The addition of optional extras may result in the vehicle increasing in Co2 g/km and therefore, attracting a higher rate of VRT than described in this product guide. For your exact configuration value, both Co2 g/km and RRP, please visit [volkswagen.ie](http://volkswagen.ie) configurator.

For exact options prices for your vehicle, please contact your local dealer or visit [www.volkswagen.ie](http://www.volkswagen.ie)

Option prices are based on the lowest available VRT band and are subject to change.

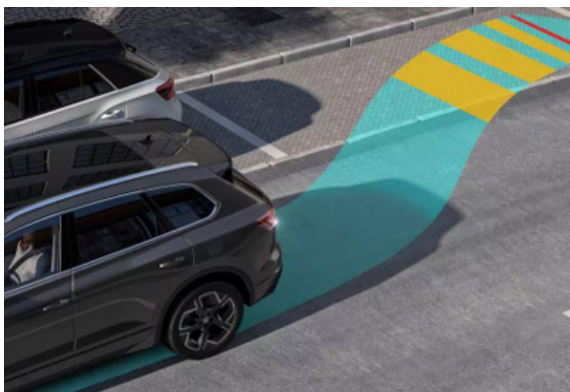
n Standard   o Optional   - Not available

Note: Some options may require other options depending on the item and trim line.

# Options

The addition of optional extras may result in the vehicle increasing in Co2 g/km and therefore, attracting a higher rate of VRT than described in this product guide. **For your exact configuration value, both Co2 g/km and RRP, please visit [volkswagen.ie](http://volkswagen.ie) configurator.**

Functional			R Line	R eHybrid	Options Priced From RRP
1D9	Trailer Hitch	Power Folding	o	-	€2,144
			-	o	€1,460
GZ2	Power latching doors		-	o	€650
PG2	Travel package		-	o	€435
4GR	Limited Safety Glass windshield	Heat and sound insulating	o	o	€505



The addition of optional extras may result in the vehicle increasing in Co2 g/km and therefore, attracting a higher rate of VRT than described in this product guide. **For your exact configuration value, both Co2 g/km and RRP, please visit [volkswagen.ie](http://volkswagen.ie) configurator.**

For exact options prices for your vehicle, please contact your local dealer or visit [www.volkswagen.ie](http://www.volkswagen.ie)

Option prices are based on the lowest available VRT band and are subject to change.

n Standard   o Optional   - Not available

Note: Some options may require other options depending on the item and trim line.

# Options (continued)

The addition of optional extras may result in the vehicle increasing in Co2 g/km and therefore, attracting a higher rate of VRT than described in this product guide. For your exact configuration value, both Co2 g/km and RRP, please visit [volkswagen.ie](http://volkswagen.ie) configurator.

Comfort			R-Line	R eHybrid	Options Priced From RRP
4D5	Active Climate Seats in front	With Massage Programs	–	o	€480
PTD	Lights & Vision package	Combination with memory package	–	o	€0
WB3	Memory package		–	o	€945



The addition of optional extras may result in the vehicle increasing in Co2 g/km and therefore, attracting a higher rate of VRT than described in this product guide. For your exact configuration value, both Co2 g/km and RRP, please visit [volkswagen.ie](http://volkswagen.ie) configurator.

For exact options prices for your vehicle, please contact your local dealer or visit [www.volkswagen.ie](http://www.volkswagen.ie)  
Option prices are based on the lowest available VRT band and are subject to change.

n Standard   o Optional   – Not available

Note: Some options may require other options depending on the item and trim line.

# Options (continued)

The addition of optional extras may result in the vehicle increasing in Co2 g/km and therefore, attracting a higher rate of VRT than described in this product guide. **For your exact configuration value, both Co2 g/km and RRP, please visit [volkswagen.ie](https://www.volkswagen.ie) configurator.**

Styling			R Line	R eHybrid	Options Priced From RRP
PA5	Multi-Colour Ambience Package		o	–	€575
WLQ	Leather package Puglia for R-Line		o	–	€2,470
WLR	Leather Package "Puglia"		–	o	€1,675
P08	Black Package for R Line	Air Intakes with Black Fins High Gloss Black trims on the Side Windows Black Exterior Mirror Housings Dark Red LED Rear Combination Lamps  Forces Option 3S7	o	–	€1,450
3S7	High Gloss Black Roof Rails	Only available in combination with P08	o	–	TBC

Alloy Wheels			R Line	R eHybrid	Options Priced From RRP
PJ4	20" York	"York" 9J x 20, Black, diamond-turned, Volkswagen R, tires 285/45 R20	o	–	€0
PJ5	21" Leeds	"Leeds" 9.5J x 21, Black, diamond-turned, tires 285/40 R21	o	–	€1,415
			–	o	€960
PJ6	21" Leeds	"Leeds" 9.5J x 21, Black, tires 285/40 R21	o	–	€1,415
			–	o	€960
PJ7	22" Estoril	"Estoril" 9.5J x 22, Black, Volkswagen R, tires 285/35 R22	–	o	€2,085
PJ9	22" Estoril	"Estoril" 9.5J x 22, Black, diamond-turned, Volkswagen R, tires 285/35 R22	o	–	€3,065
			–	o	€2,085

The addition of optional extras may result in the vehicle increasing in Co2 g/km and therefore, attracting a higher rate of VRT than described in this product guide. **For your exact configuration value, both Co2 g/km and RRP, please visit [volkswagen.ie](https://www.volkswagen.ie) configurator.**

For exact options prices for your vehicle, please contact your local dealer or visit [www.volkswagen.ie](https://www.volkswagen.ie)

Option prices are based on the lowest available VRT band and are subject to change.

n Standard   o Optional   – Not available

Note: Some options may require other options depending on the item and trim line.

# Options (continued)

The addition of optional extras may result in the vehicle increasing in Co2 g/km and therefore, attracting a higher rate of VRT than described in this product guide. For your exact configuration value, both Co2 g/km and RRP, please visit [volkswagen.ie](http://volkswagen.ie) configurator.

Paint			R Line	R eHybrid	Options Priced From RRP
MP0	Solid Paint	Pure White	n	n	€0
MP6	Metallic Paint	Grenadilla Black	o	-	€1,630
			-	o	€1,110
MP1	Metallic Paint	Chilli red	o	-	€1,650
		Oyster Silver	-	o	€1,120
		Silicon Gray	-	o	€1,120
MP2	Metallic Paint	Meloe Blue Crystal Effect	o	-	€2,265
		Sechura Beige	-	o	€1,535
	Metallic Paint	Silicon Gray Matte	-	o	€TBC
MP2	Metallic Paint	Lapiz Blue	-	o	€1,535



The addition of optional extras may result in the vehicle increasing in Co2 g/km and therefore, attracting a higher rate of VRT than described in this product guide. For your exact configuration value, both Co2 g/km and RRP, please visit [volkswagen.ie](http://volkswagen.ie) configurator.

For exact options prices for your vehicle, please contact your local dealer or visit [www.volkswagen.ie](http://www.volkswagen.ie)

n Standard   o Optional   - Not available

Note: Some options may require other options depending on the item and trim line.

# Colours



Pure White Solid

**0Q0Q**



Grenadilla Black Metallic

**0E0E**



Chili Red Metallic

**W0W0**



Oyster Silver Metallic

**F0F0**



Silicon Gray Metallic

**3M3M**



Tamarind Brown

**3V3V**



Lapiz Blue Metallic\*

**L9L9**



Meloe Blue Crystal Effect

**D6D6**



Sechura Beige Metallic

**5Q5Q**



Oryx White Pearl Effect

**0R0R**



Silicon Grey Matt\*

**9D9D**

Please note, the print processes do not allow exact reproduction of the paint colours.

\* Exclusive to R ehybrid

# Alloy Wheels

The addition of optional extras may result in the vehicle increasing in Co2 g/km and therefore, attracting a higher rate of VRT than described in this product guide. For your exact configuration value, both Co2 g/km and RRP, please visit [volkswagen.ie](https://www.volkswagen.ie) configurator.



**STANDARD ON R-LINE & R EHYBRID**

20" 'Braga' alloy wheels, in 'Black' with diamond turned surface



**OPTIONAL ON R LINE**

20" York Alloy  
York 9J x 20, Black, diamond-turned, tires 285/45 R20  
PJ4



**OPTIONAL ON R LINE & R EHYBRID**

21" Leeds Alloys  
Leeds 9.5J x 21, Black, diamond-turned, tires 285/40 R21  
PJ5



**OPTIONAL ON R LINE & R EHYBRID**

21" Leeds Alloys 'Black'  
Leeds 9.5 J x 21 in black, tires 285/40 R 21  
PJ6



**OPTIONAL ON R LINE R EHYBRID**

22" Estoril Alloys 'Diamond Turned Surface'  
Estoril 9.5J x 22, Black, diamond-turned, Volkswagen R, tires 285/35 R22  
PJ9



**OPTIONAL ON R EHYBRID**

22" Estoril Alloys 'Black'  
Estoril 9.5J x 22, in Black, Volkswagen R, tires 285/35 R22  
PJ7

The addition of optional extras may result in the vehicle increasing in Co2 g/km and therefore, attracting a higher rate of VRT than described in this product guide. For your exact configuration value, both Co2 g/km and RRP, please visit [volkswagen.ie](https://www.volkswagen.ie) configurator.

# Upholstery



**"Vienna" leather R eHybrid**  
Soul Black - Crystal Grey



**Optional "Puglia" leather**  
Soul Black



**"Vienna" leather R Line**  
Soul Black - Crystal Grey

Carpet    Head-liner

## **R Line & R eHybrid**

"Vienna Leather"	ID	Soul Black	Black	Black
---------------------	----	------------	-------	-------

## **R e Hybrid (Optional)**

"Puglia leather"	OF	Soul Black	Black	Black
---------------------	----	------------	-------	-------

Note:  
Requires WLR

Please note, the print processes do not allow exact reproduction of the upholstery colours.

Effective from 01stOctober 2024, for production from CW36/2024 onwards. All prices include VAT and VRT.



# Technical Data

<b>Engine</b>	<b>3.0TDI 231HP<sup>1</sup></b>
<i>Gearbox type</i>	8 speed auto DSG
<i>Engine type</i>	V6
<i>Fuel tank capacity, ltrs</i>	75.0 litres
<i>Cubic capacity, ltrs/cc</i>	3.0 / 2.967
<i>Max. output, kW/HP</i>	170 kW
<i>Max. torque, Nm</i>	500 Nm / 1500 - 3000 1/min
<b>Performance</b>	
<i>Top speed, km/h, where the law permits:</i>	222 km/h
<i>Acceleration, secs 0 - 100km/h:</i>	TBC
<b>Environmental information</b>	
<i>Official fuel consumption ltr per 100km:</i>	8.2 /100km
<b>WLTP: (Min-Max)</b>	
<i>Low speed consumption</i>	12.0 - 12.1
<i>Medium speed consumption</i>	8.2 - 8.3
<i>High speed consumption</i>	6.8 - 6.9
<i>Extra high speed consumption</i>	7.9 - 7.9
<i>Combined speed consumption</i>	8.2 - 8.2
<i>WLTP Emissions Combined, CO<sub>2</sub> g/km:</i>	214 - 215
<i>Emission class</i>	Euro 6 EA

<sup>1</sup>VRT Bands and rate of Annual Road Tax are valid as of 1st January 2022 and calculated from the base model WLTP values for model year 2025 cars produced from CW36/2024 onwards. All vehicles with TBC are subject to EU type approval and with that were not available at time of going to print.

The specified fuel consumption and emission values are the official figures obtained from tests under standardised EU test conditions in accordance with the Worldwide Harmonized Light Vehicles Test Procedure (WLTP). The above values reflect the standard vehicle excluding additional equipment such as optional extras and accessories which may have an effect on the fuel consumption (l/100km) and CO<sub>2</sub> emissions produced. To discover exact values please configure your desired vehicle at [volkswagen.ie/build](https://volkswagen.ie/build). You can discover more about the WLTP at [volkswagen.ie/wltp](https://volkswagen.ie/wltp).

Importantly note that the rate at which your vehicle pays Vehicle Registration Tax may increase as a result of your vehicle configuration. For more information, please consult your local Authorised Volkswagen retailer.

In accordance with (EU) 2020/740 ("Tire Labeling Regulation"), please visit [volkswagen.ie](https://volkswagen.ie) configurator for details relating to the tyres applicable to said vehicles.

Please note every effort has been made to ensure the contents of this publication (including RRP, CO<sub>2</sub>, fuel consumption and technical information) were accurate and up-to-date at the time of going to print 1st October 2024. Volkswagen Ireland reserves the right to change specification, prices and withdraw products from sale without notice. Any such alternations will be notified to Volkswagen Retailers at the earliest opportunity. Please consult your local Authorised Volkswagen retailer for the latest product information.

3 Years Tyre Insurance covers tyres that are damaged by an Insured Event. Exclusions do apply. For more information on general terms and conditions, please click here (<https://www.volkswagen.ie/en/owners-and-users/wheels-and-tyres.html>)

# Technical Data

Engine	3.0 TSI PHEV 462HP
<i>Gearbox type</i>	8 speed auto DSG
<i>Engine type</i>	V6
<i>Fuel tank capacity, ltrs</i>	75.0 litres
<i>Cubic capacity, ltrs/cc</i>	3.0 / 2,995
<i>Max. output, kW/HP (Combustion engine only)</i>	250
<i>Max. torque, Nm</i>	450 Nm / 1340 - 5300 1/
<b>Electric motor / Charging system</b>	
<i>Electrical power output, kW (Electric motor only)</i>	100
<i>Combined Max Output, kW/HP</i>	340/462
<i>Combined Max torque, Nm</i>	TBC
<i>Battery Type</i>	Lithium-Ion
<i>Battery energy capacity, kWh</i>	14.3 kWh
<i>Charging time: AC 2.3 kW, 100% State of Charge, hour:min</i>	8:30
<i>Charging time: AC 3.6 kW, 100% State of Charge, hour:min</i>	5:10
<b>Electrical power consumption kWh/100km</b>	
<i>Combined, kWh/100km</i>	23.8 - 24.1
<i>Electrical range, km</i>	49 - 51
<b>WLTP emissions combined</b>	
<i>WLTP CO2 emission, g/km (min-max)</i>	50 - 52

<sup>1</sup>VRT Bands and rate of Annual Road Tax are valid as of 1st January 2022 and calculated from the base model WLTP values for model year 2025 cars produced from CW36/2024 onwards. All vehicles with TBC are subject to EU type approval and with that were not available at time of going to print.

The specified fuel consumption and emission values are the official figures obtained from tests under standardised EU test conditions in accordance with the Worldwide Harmonized Light Vehicles Test Procedure (WLTP). The above values reflect the standard vehicle excluding additional equipment such as optional extras and accessories which may have an effect on the fuel consumption (l/100km) and CO<sub>2</sub> emissions produced. To discover exact values please configure your desired vehicle at [volkswagen.ie/build](https://volkswagen.ie/build). You can discover more about the WLTP at [volkswagen.ie/wltp](https://volkswagen.ie/wltp).

Importantly note that the rate at which your vehicle pays Vehicle Registration Tax may increase as a result of your vehicle configuration. For more information, please consult your local Authorised Volkswagen retailer.

In accordance with (EU) 2020/740 ("Tire Labeling Regulation"), please visit [volkswagen.ie](https://volkswagen.ie) configurator for details relating to the tyres applicable to said vehicles.

Please note every effort has been made to ensure the contents of this publication (including RRP, CO<sub>2</sub>, fuel consumption and technical information) were accurate and up-to-date at the time of going to print 1st October 2023. Volkswagen Ireland reserves the right to change specification, prices and withdraw products from sale without notice. Any such alternations will be notified to Volkswagen Retailers at the earliest opportunity. Please consult your local Authorised Volkswagen retailer for the latest product information.

3 Years Tyre Insurance covers tyres that are damaged by an Insured Event. Exclusions do apply. For more information on general terms and conditions, please click here (<https://www.volkswagen.ie/en/owners-and-users/wheels-and-tyres.html>)